

Features

- Direct acting operation and high flow construction
- Direct acting, high flow slide-style valve
- Optional flow control regulates cylinder speed independently, in either direction
- Mechanical detent on dual solenoids holds last position, even after loss of electric power, pneumatics or pressure
- No Minimum Operating Pressure Differential required to shift valve
- Dual solenoid operation: solenoid may be energized momentarily (1/10 second) or continuously
- Mountable in any position

Construction

Valve Parts in Contact with Fluids		
Body	Brass	304 Stainless Steel
Seals and Discs	NBR and FKM	
Core Tube	305 Stainless Steel	
Core and Plugnut	430F Stainless Steel	
Springs	302 Stainless Steel / 17-7 PH Stainless Steel	
Shading Coil	Copper	
Sleeve	PA	
Seats	Graphite-filled PTFE	

Electrical

Standard Coil and Class of Insulation	Watt Rating and Power Consumption			Spare Coil Part Number	
	AC			General Purpose	Explosionproof
	Watts	VA Holding	VA Inrush	AC	AC
F	16.1	35	115	272610	272614
F	20.1	45	140	272610	272614

Standard Voltages: 24, 120, 240, 480 volts AC, 60 Hz. 24, 110, 115, 220, 230 volts AC, 50 Hz. Other voltages are available when required.

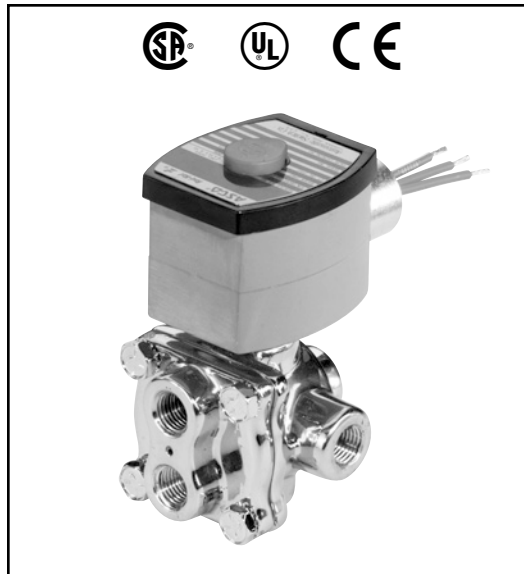
Note: No combination 120/60, 110/50 coil available. Must order either 120/60 or 110/50, etc.

Solenoid Enclosures

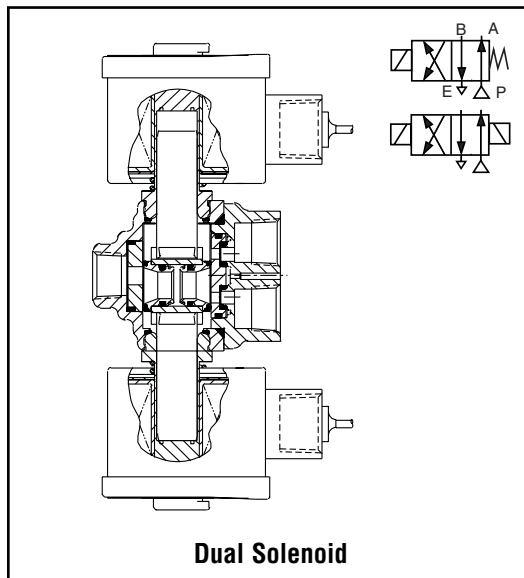
Standard: Watertight, Types 1, 2, 3, 3S, 4, and 4X.

Optional: Explosionproof and Watertight, Types 3, 3S, 4, 4X, 6, 6P, 7, and 9. (To order, add prefix "EF" to catalog number.)

See *Optional Features Section* for other available options.



4-WAY



Nominal Ambient Temp. Ranges

Standard Class F insulation: 32°F to 125°F (0°C to 52°C)
Optional Class H insulation: 32°F to 140°F (0°C to 60°C)

Refer to *Engineering Section* for details.

Approvals

CSA certified. UL listed as General Purpose Valves. Meets applicable CE directives.

Refer to *Engineering Section* for details.

Specifications (English units)

Pipe Size (in)	Orifice Size (in)	Cv Flow Factor ①	Operating Pressure Differential (psi)			Max. Fluid Temp. °F	Brass Body		Stainless Steel Body		Watt Rating/ Class of Coil Insulation
			Max. AC				Catalog Number	Const. Ref.	Catalog Number	Const. Ref.	
			Air-Inert Gas	Water	Lt. Oil @ 300 SSU	AC					AC
SINGLE SOLENOID CONSTRUCTION											
1/4	3/16	.70	125	100	100	160	8342G001	1	8342G701	2	20.1/F
3/8	3/16	.70	125	100	100	160	8342G003	1	8342G703	2	20.1/F
DUAL SOLENOID CONSTRUCTION											
1/4	3/16	.70	125	125	125	160	8342G020	3	8342G720	4	16.1/F
3/8	3/16	.70	125	125	125	160	8342G022	3	8342G722	4	16.1/F

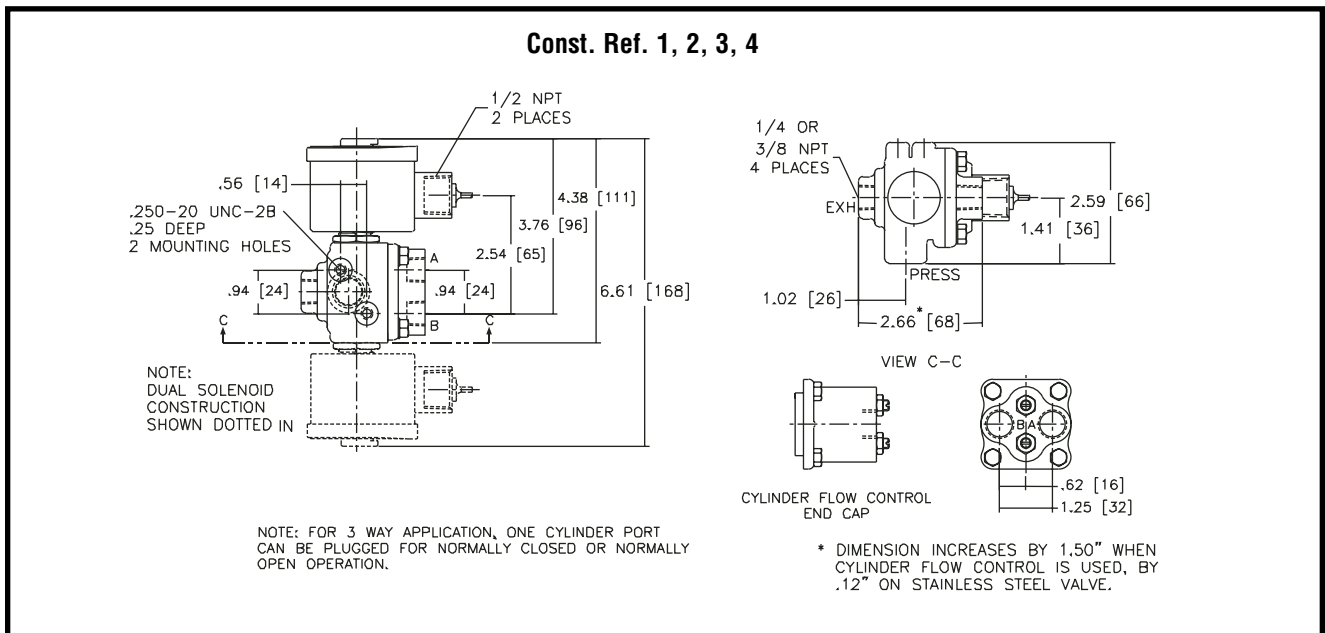
① With built-in flow control (Suffix "M"), the Cv is 0.44 and an 0.5 psi minimum operating pressure is required.

Specifications (Metric units)

Pipe Size (in)	Orifice Size (mm)	Kv Flow Factor (m3/h) ①	Operating Pressure Differential (bar)			Max. Fluid Temp. °C	Brass Body		Stainless Steel Body		Watt Rating/ Class of Coil Insulation
			Max. AC				Catalog Number	Const. Ref.	Catalog Number	Const. Ref.	
			Air-Inert Gas	Water	Lt. Oil @ 300 SSU	AC					AC
SINGLE SOLENOID CONSTRUCTION											
1/4	4.8	.60	9	7	7	71	8342G001	1	8342G701	2	20.1/F
3/8	4.8	.60	9	7	7	71	8342G003	1	8342G703	2	20.1/F
DUAL SOLENOID CONSTRUCTION											
1/4	4.8	.60	9	9	9	71	8342G020	3	8342G720	4	16.1/F
3/8	4.8	.60	9	9	9	71	8342G022	3	8342G722	4	16.1/F

① With built-in flow control (Suffix "M"), the Kv is 0.38 and an 0.03 bar minimum operating pressure is required.

Dimensions inches (mm)





Butler & Land Technologies

Butler & Land, Technologies is a manufacturer representative and distributor with extensive experience in the distribution and application of electrical equipment, instrumentation, controls and sensors to industrial and utility providers for over 70 years. Some of the industries we provide service to include, but are not limited to; food/beverage, water utilities, refineries, petrochemical plants, OEM's and electrical utilities.

www.butlerandland.com

Dallas, Texas

214-343-8800

10823 Sanden Dr, Dallas, TX 75238

Houston, Texas

713-896-0808

10900 Brittmoore Park Dr J, Houston, TX 77041